



Public Transport
Authority



Transperth

Public Transport (Transperth)

What data is captured and how can it assist the wider transport management task.

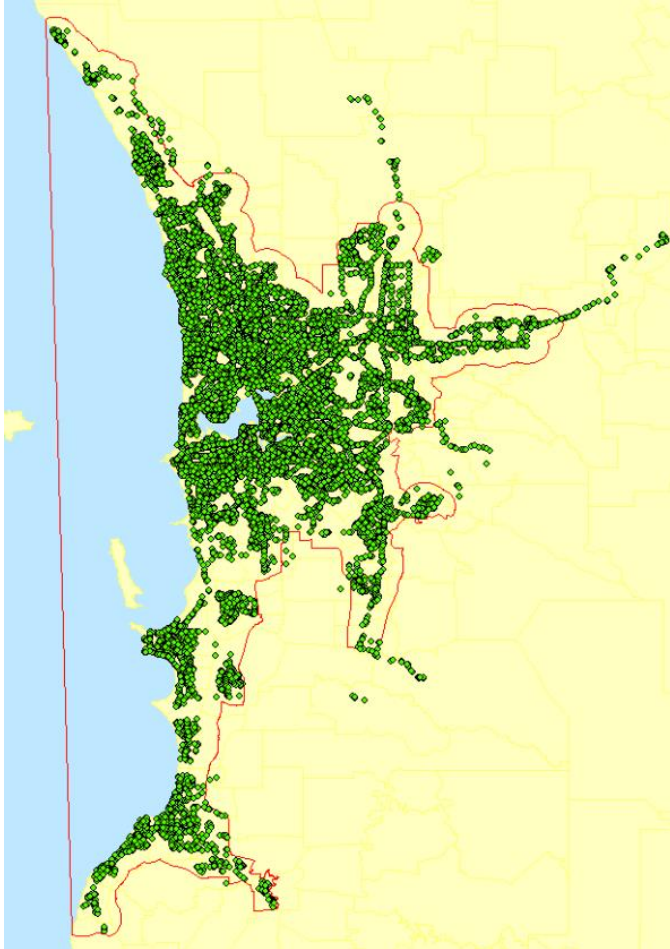
Brendan Lumbers
Business Analyst
Transperth, Regional and School Bus Services
TransperthBI@pta.wa.gov.au

Feb 2018

Network Overview

	Bus	Train	Ferry	System
Fleet	1469	297	2	
Route Length (km)	8,279	195	2.76	8,477
Avg. Weekday Trips	16,596	1,085	122/60	
Service km	68,237,000	20,663,000	53,000	88,953,000
Avg. Weekday Boardings	336,000	225,000	1,676	562,676
Annual Boardings	80,017,000	60,092,000	748,000	141,857,000
Avg Passenger Trip length (km)	5.26	19	1.44	
Passenger travel distance (km)	420,845,000	969,085,000	1,077,000	1,391,000,000

Service Coverage



Transperth Service Coverage Area:

- 2,207 square km
- 998,993 Property Street Addresses
- 85% within 500m of a stop with acceptable service level (3 trips/hr in Peak and 1 trip /hr inter-peak)

Extends:

- North to Two Rocks
- South to Dawesville
- East to Chidlow

Patronage Overview

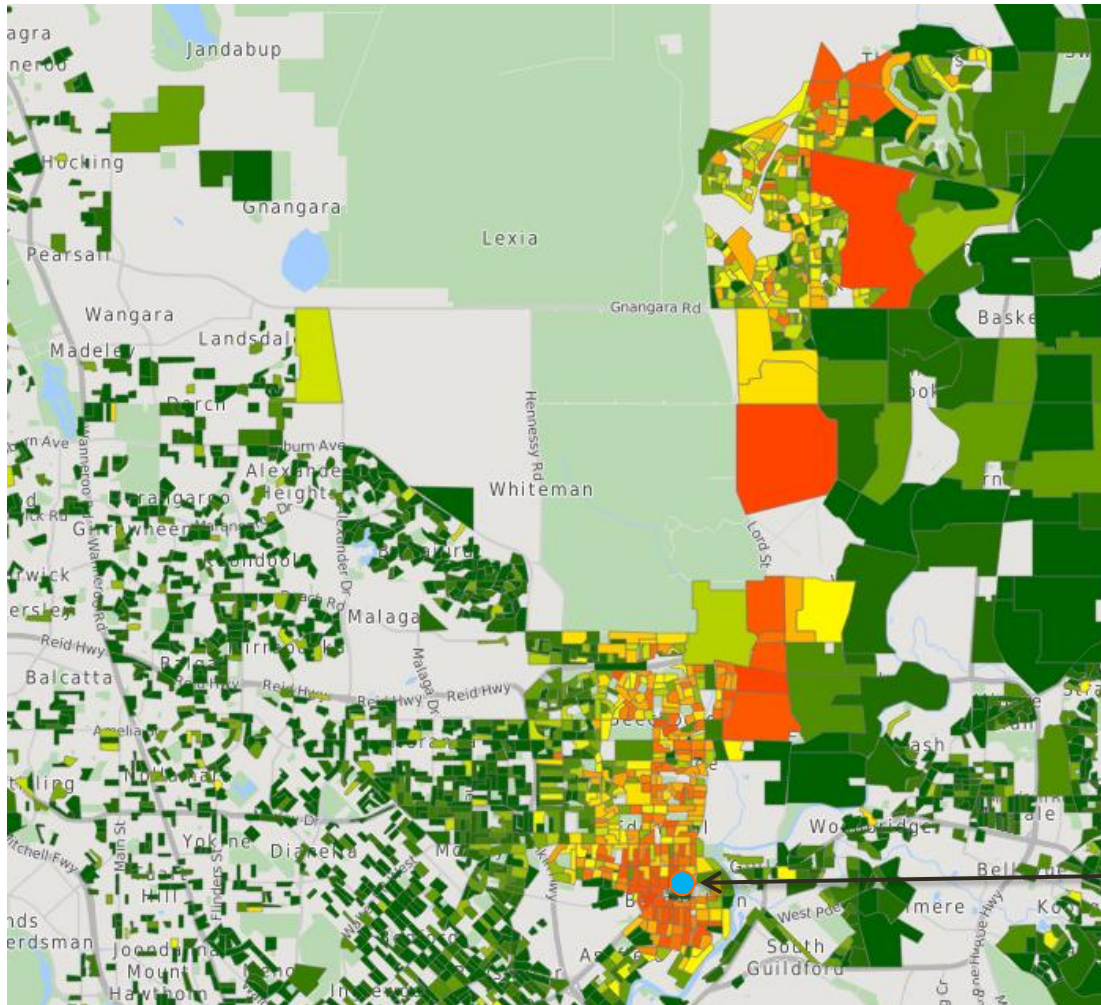
- Patronage Breakdown

	Bus	Train	Ferry	System
Standard	27%	54%	58%	38%
Concession	38%	36%	40%	37%
School	16%	7%	1%	12%
FTZ & CAT	19%	1%	0%	11%
Special Events	0%	2%	0%	1%
TOTAL	100%	100%	100%	100%
System Modal Split	57%	43%	< 1%	

- Data Source

	Bus	Train	Ferry	System
SmartRider	65%	77%	45%	70%
Cash	15%	20%	55%	17%
Estimated	19%	3%	1%	12%
TOTAL	100%	100%	100%	100%
SmartRider % of ticketed travel	81%	80%	45%	80%

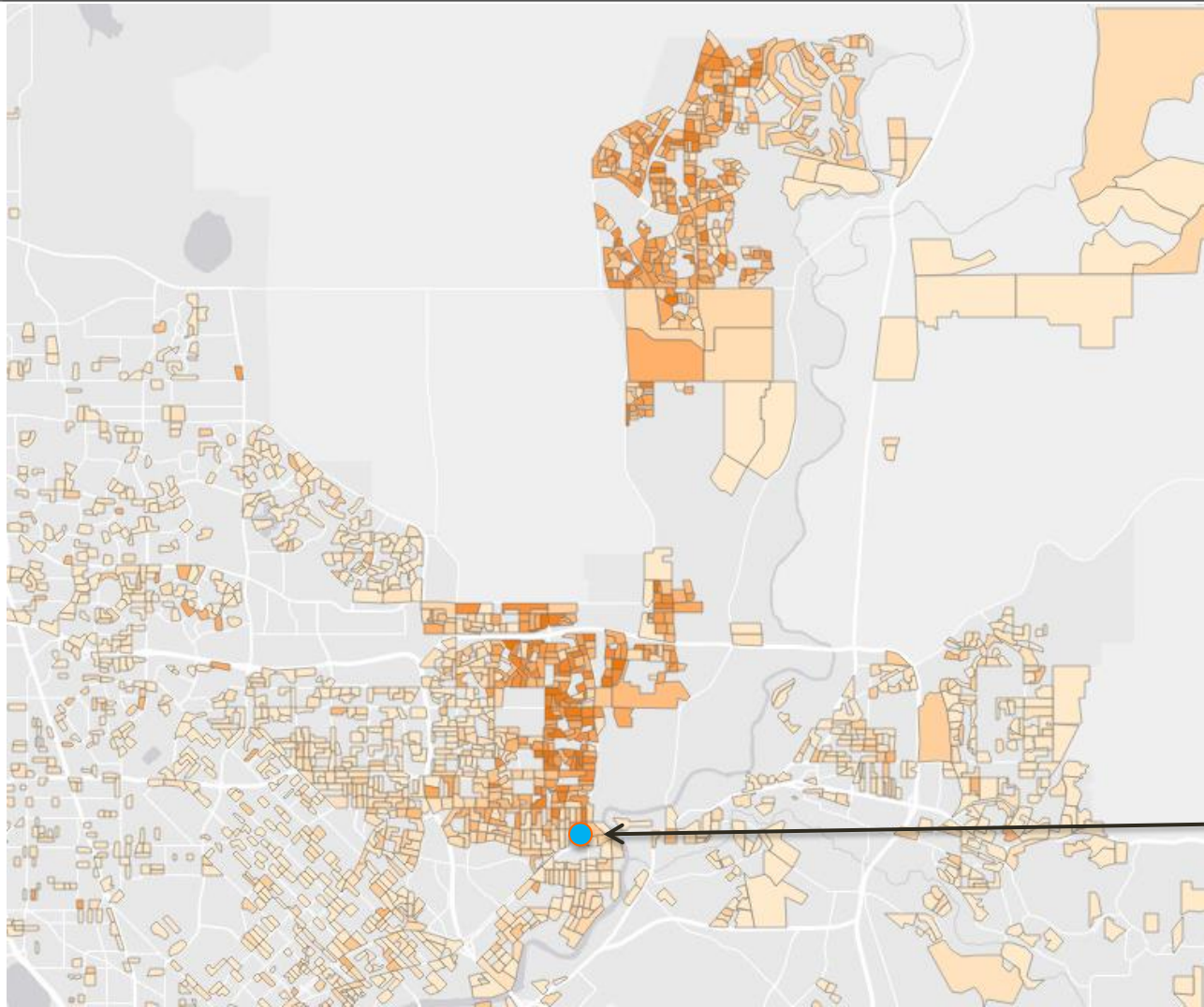
Train network entry usage Customer registered address (Meshblock)



All Arrivals

Bassendean
Train Station

Train network entry usage Customer registered address (Meshblock)

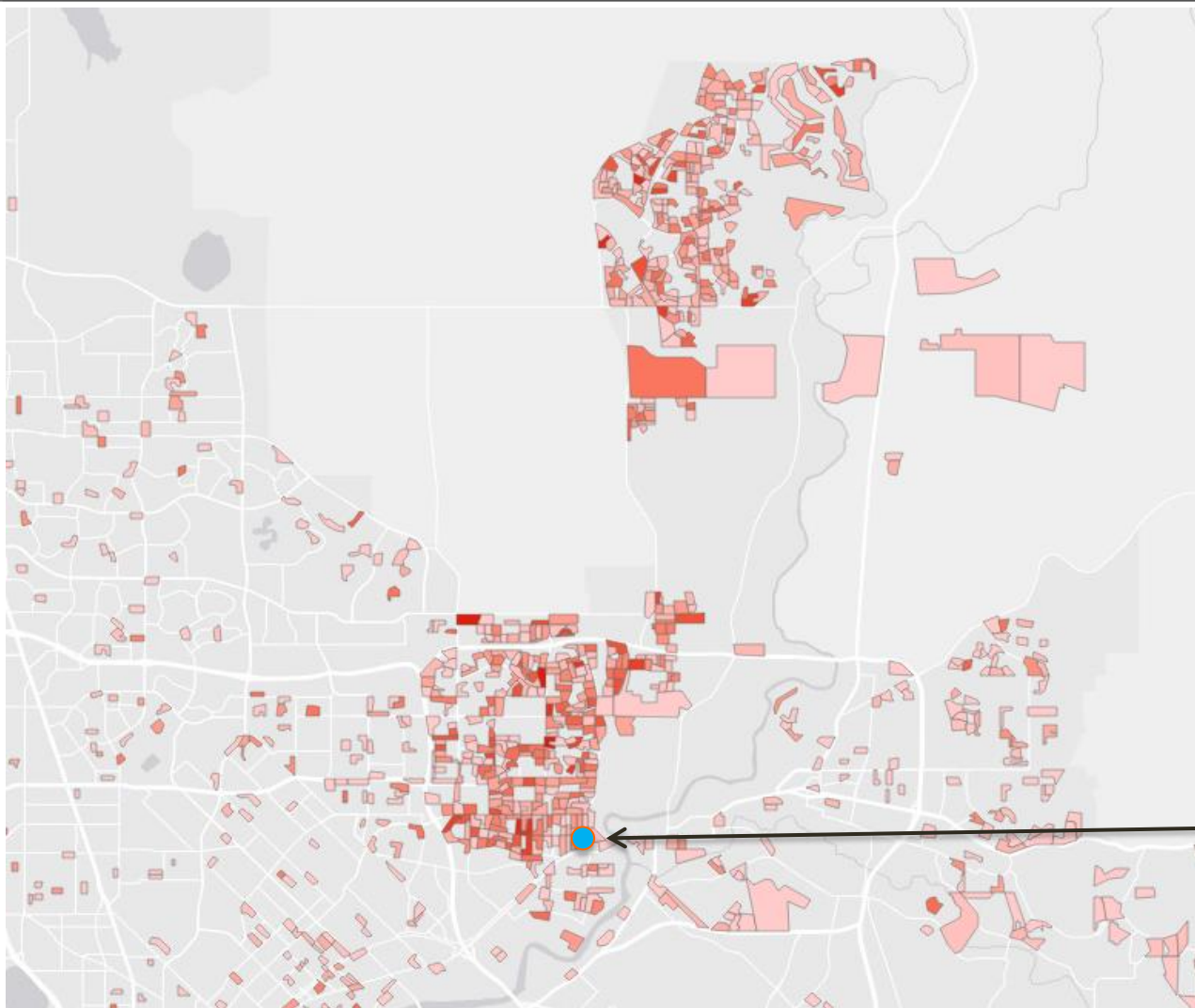


Arrival By Bus
35%

Bassendean
Train Station

Train network entry usage

Customer registered address (Meshblock)

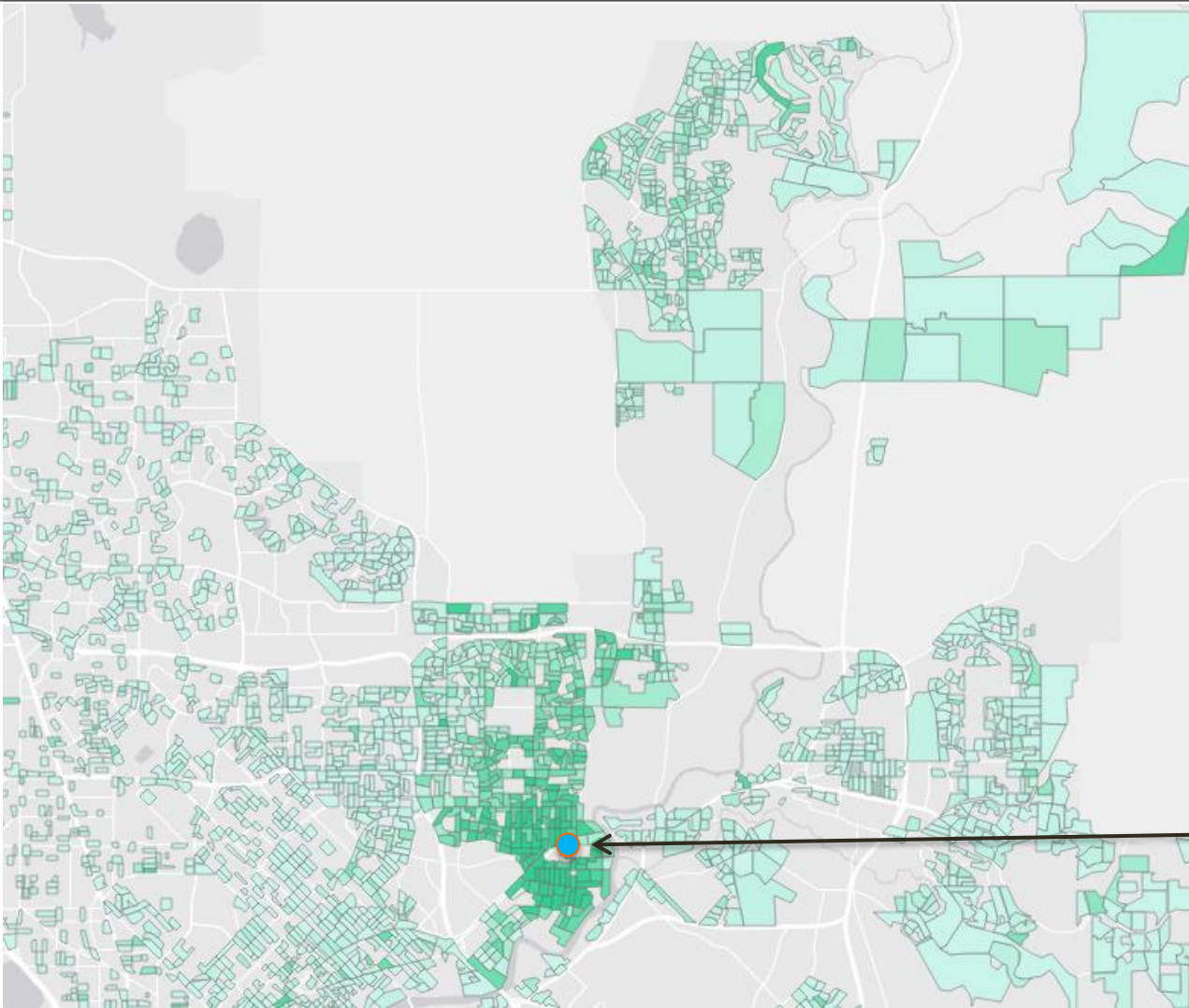


Arrival By Car (Driver)
18%

Bassendean
Train Station

Train network entry usage

Customer registered address (Meshblock)



No arrival context
47%

Includes:

- Passenger
- Active Transport
- Kiss and Ride
- Unmatched addresses

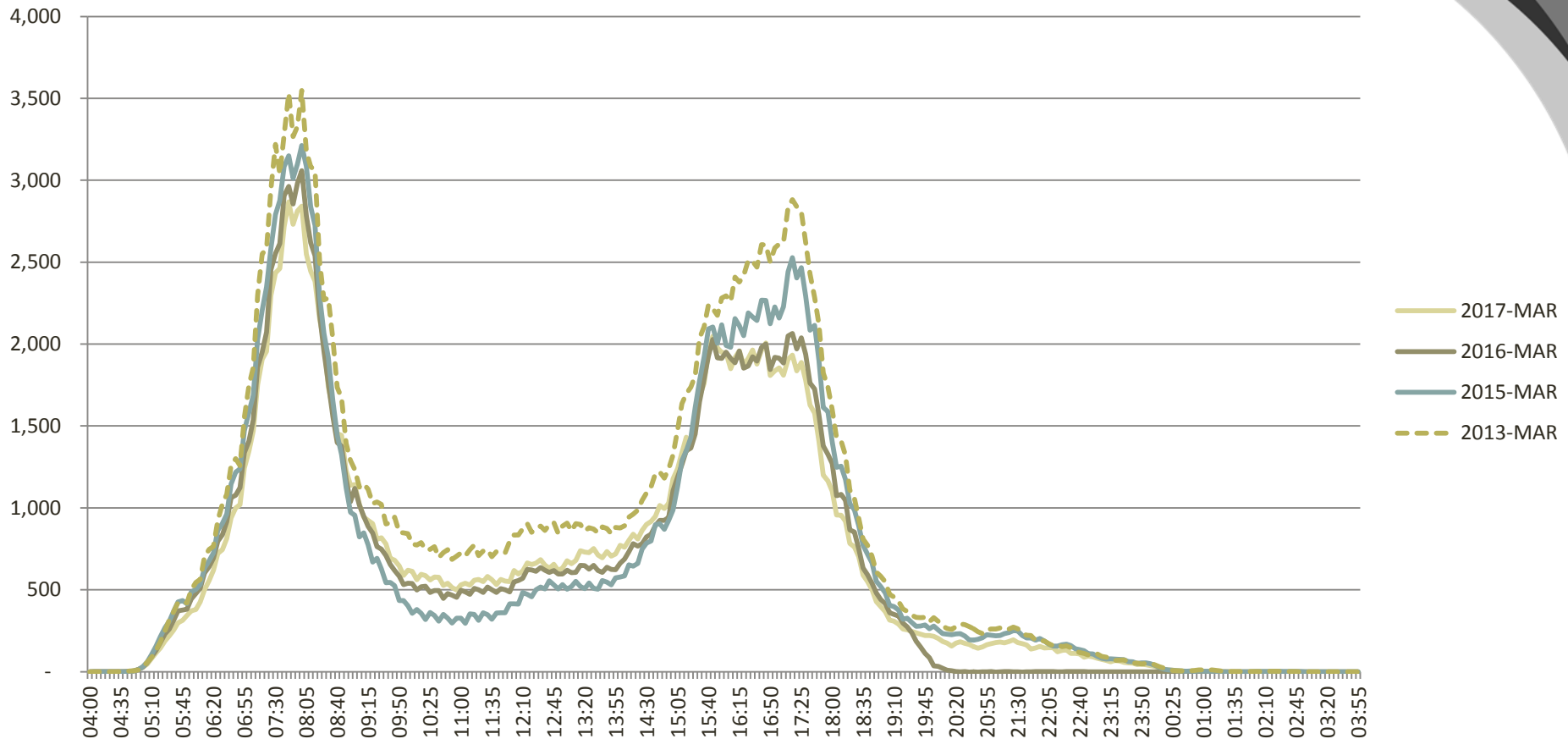
Bassendean
Train Station

Train Station network – Entry method

Location	Km from Perth	Weekday Boardings		Station Arrivals - Train network entry point										
		Total	SmartRider Usage	%	Boardings				Passenger Category Overview					
					Bus	Car	Bike	Other	Standard	Tertiary	School	Concession (Cash)	Senior/Pensioner	Other
TOTAL		52,158,319	82%	46%	27%	20%	1%	52%	56%	15%	11%	8%	7%	3%
MIN		37,462	62%	8%	0%	0%	0%	24%	25%	5%	3%	3%	3%	1%
MAX		18,091,005	91%	96%	52%	48%	3%	100%	73%	35%	53%	20%	22%	27%
Perth City Stations	-	18,091,005	85%	8%	37%	0%	0%	63%	65%	14%	5%	5%	8%	3%
Elizabeth Quay City Stations	1	2,760,043	91%	10%	46%	0%	0%	54%	72%	14%	4%	4%	5%	2%
Armadale Armadale Line	30	397,448	62%	77%	23%	17%	1%	59%	37%	9%	15%	20%	12%	7%
Currambine Joondalup Line	29	502,415	85%	96%	0%	47%	1%	51%	70%	11%	9%	5%	3%	2%
Murdoch Mandurah Line	14	1,984,143	84%	67%	52%	23%	0%	24%	51%	20%	14%	7%	6%	2%
Bassendean Midland Line	11	705,430	73%	91%	35%	18%	0%	46%	51%	14%	14%	11%	7%	4%

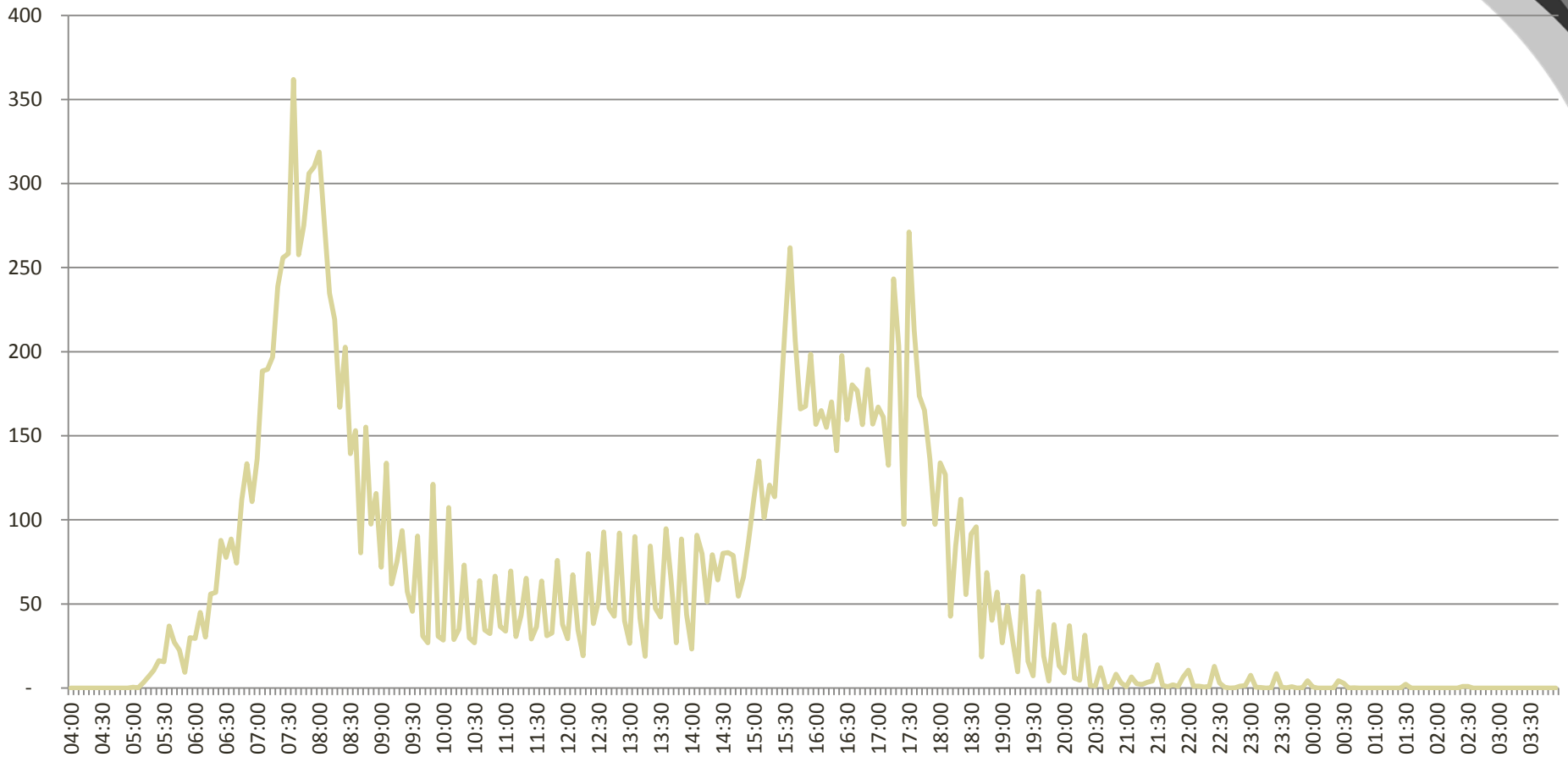
Train Network – Passengers travelling by time

March Average Weekdays



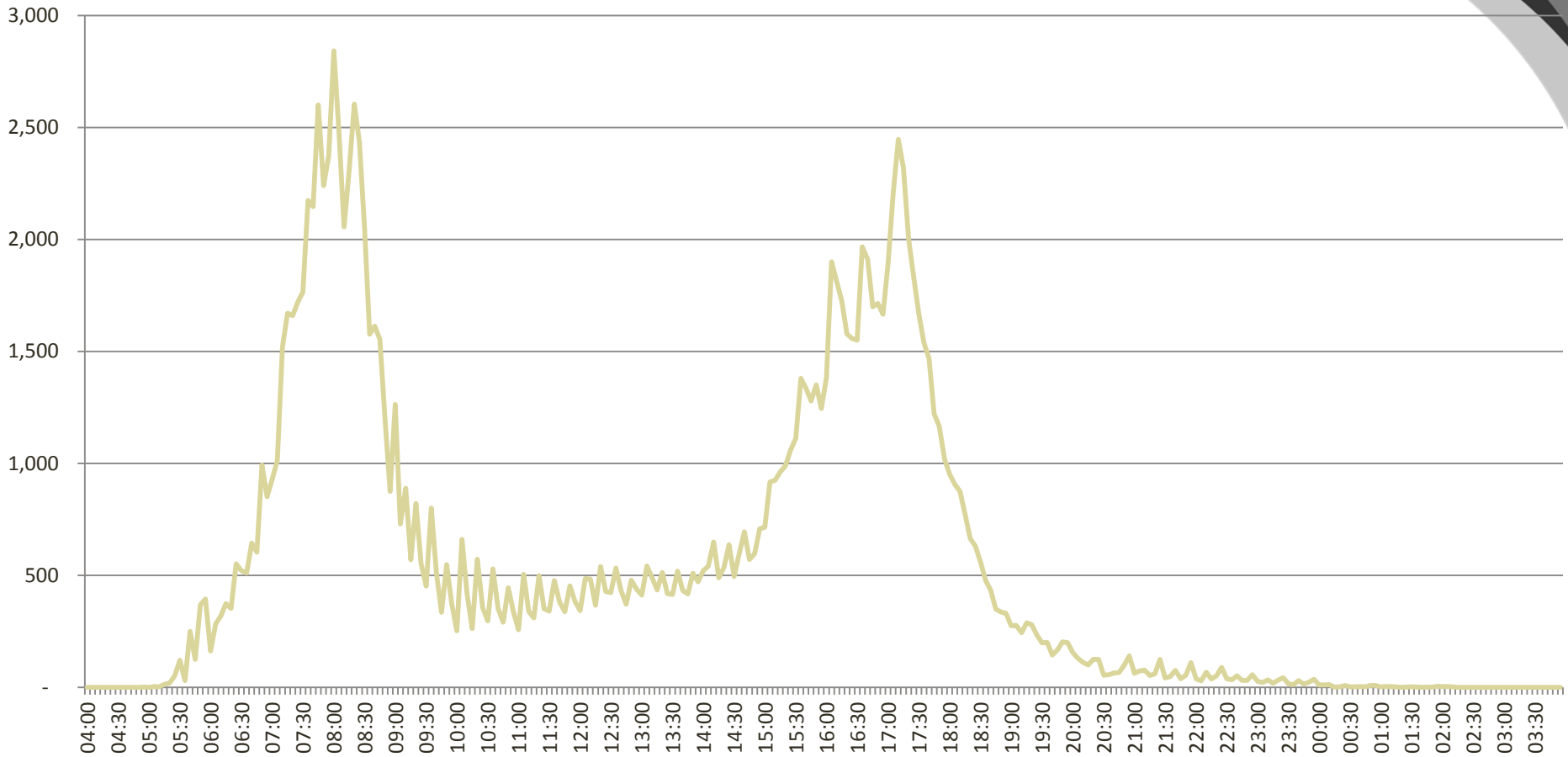
Murdoch Station – Activity by Time (5mins)

March Average Weekday 2017



Perth Station – Activity by Time (5mins)

March Average Weekday 2017



Planned Data Sharing Improvements

- Increased staffing levels
- Review and improvement of Transperth's data warehouse (netBI)
- Creation and publication of standardised reports
- Improved support for DoT modelling
- Increased ability to support external requests
- Enabling access to select data sets via API